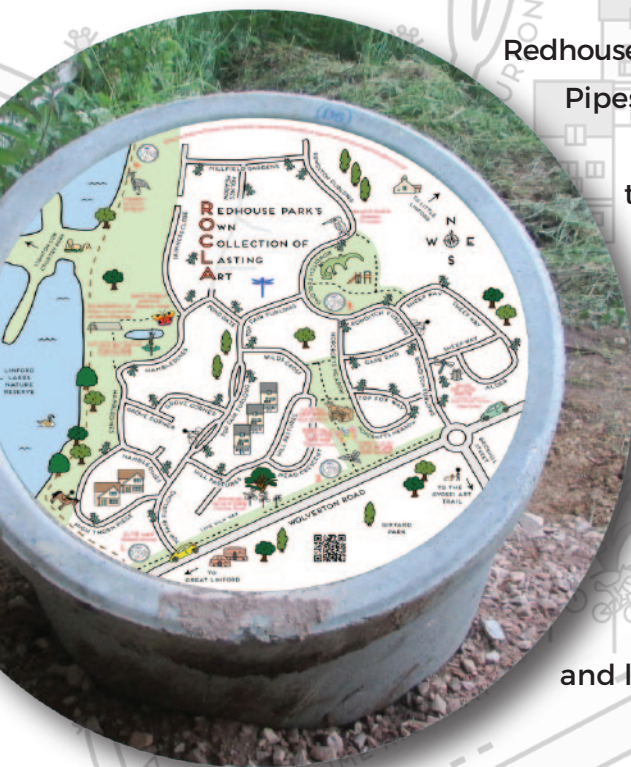


September  
2018

REDHOUSE PARK'S  
OWN  
COLLECTION OF  
LASTING  
ART

# The ROCLA Art Trail



Redhouse Park was former home to Rocla Pipes who manufactured all sizes of concrete pipes that were used throughout the United Kingdom. After the company left in the late 1980s, the land became a brownfield site until Avant Homes developed the area.

£106 Developer funding paid for the artworks commissioned to make the ROCLA Art Trail. This reflects the nature, magic and location of the area establishing a legacy for its residents.

[www.great-linford.gov.uk](http://www.great-linford.gov.uk)

This project was created for residents of Redhouse Park, supported by Great Linford Parish Council.

Special thanks to The Public Arts Trust-MK, Niftylift, Bunnings and residents of Redhouse Park who have supported the Project.

# RUTH MOILLIET



Ruth Moilliet produces highly finished metal and glass sculptures inspired by the plant kingdom. In her work she aims to draw the viewer's attention to both the overall spectacle and individual beauty of a flower. Her work is inspired by her close study of a particular species and the beautiful, intricate forms she discovers. The finished pieces and the materials used explore the apparent fragility of an individual plant contrasted with its ability to sustain existence through ongoing lifecycles. Her sculptures are predominantly made from metal but she often combines other materials such as glass and acrylic to reflect her interpretation of a particular structure.

Ruth's artworks are limited editions, she has created numerous commissions and her work features in corporate, institutional and private collections both internationally and across the UK.

## *Three Leaf Sculpture*

Ruth's commission was inspired by the wealth of local flora and the many insects that feed and pollinate these flowers aiding the biodiversity of our local area. The three leaf structure portrays different stages of growth and form: one still unfurling, another reaching out and creating a canopy and a third growing high



into the sky. Each leaf has swathes of flower forms cut out of them. Attached to the upper sections of the leaves are coloured insects and smaller flower parts adding further detail and vibrancy to the work. The leaves are placed in Hopcrofts Meadow so that residents can move round them and enjoy the finer details and silhouettes created by the cut-outs against the sky.

Leaf 1 February – June Blackthorn Blossom, Coltsfoot, Cowslip, Cuckoo Flower, Speedwell

Leaf 2 May – August Buttercup, Celandine, Corncockle, Cornflower, Daisy, Forget-me-not, Poppy

Leaf 3 June – October Chickweed, Field Scabious, Marsh Woundwort, Wild Carrot, Yellow Vetchling

## **FUN FACT**

CAN YOU SPOT 24  
DRAGONFLIES, BEES,  
BUTTERFLIES AND  
HOVERFLIES ON THE  
LEAVES?



# THOMAS D GRAY

Thomas Gray is an artist, filmmaker and founder of The Gray Circle. Based in Milton Keynes, Thomas has been creating large-scale, socially engaging and interactive installations and environments for over 25 years. His artworks, called Lightscapes, incorporate light, colour, sound and moving image, and are often designed to transform particular spaces and contexts into evolving aesthetic experiences for viewers. Research based, he often starts with sourcing archive and found materials which are then mixed with contemporary cinematic imagery and interviews to create evocative, time-based compositions. Thomas is also a founder member of Grid Arts: an MK-based artist collective that specialise in multidisciplinary community engagement projects.

## *Bird Walk Electric Dreams*

The broad variety of birds at our neighbour Linford Lakes Nature Reserve as well as in the natural woodlands of Redhouse Park, were inspiration for Thomas Gray the artist commissioned for this exciting community project Bird Walk Electric Dreams. Guided by Thomas, residents created fabulous new birdlike creatures that perch high in the trees in Hopcrofts Meadow; these fanciful fowl shyly blend with the foliage by day but at night come alive illuminated showing their true colours of electric plumage. Thomas was further inspired by a custom in Chinese cities where people take their caged songbirds to the park and hang them in the trees; this is called Walking the Bird or Bird Walk.



*Bird Walk Electric Dreams*



# ROB GRIFFITHS




Rob Griffiths has lived in the Forest of Dean, Gloucestershire for most of his life. His sculptures are influenced by his love of the forest and the wildlife that surrounds him. All the timber used for his sculptures is sustainably sourced locally. He has undertaken many commissions – from councils, schools, parks and private individuals – all specifically designed to be in harmony with the surroundings. His work involves the use of chainsaws, power tools and traditional wood carving tools. Rob carved the giant frog for the Gyosei Art Trail.

## *Carved Oak Root*

The nature of the 500-year old oak root carved for Redhouse Park, itself is a beautiful sculpture. By inseting benches and carving mystical creatures in and around the root, it is interactive and magical for children and adults. From whichever direction you approach it is a stunning site to behold in Hopcrofts Meadow.



## **FUN FACT**

THIS LITTLE   
GREW FOR OVER 500  
YEARS AND BECAME A  
MAJESTIC OAK IN THE  
FOREST OF DEAN



# PTOLEMY ELRINGTON

Ptolemy Elrington was born in the south of England but grew up in the north. He studied art and design to degree level at Bradford and Ilkley Community College in the mid-eighties. He has travelled extensively and has worked at a variety of jobs including theatre set and stage design and construction, large scale community art sculptural projects and all whilst pursuing his own artistic agenda.

He concentrates on creating sculpture of natural forms from found and re-cycled materials which include shopping trolleys, scrap metal and car wheel trims which he re-shapes into a variety of life forms.

He has exhibited in London, Brighton, Haslemere, Rutland, Salisbury, Scotland, Barcelona, Spain and Athens, Greece.

## *Heron & Kingfisher*

“ This area is well wooded and has plentiful water features, it attracts a wide variety of bird life, the kingfisher and the heron have been spotted in this area and thus my sculptures will appeal to nature lovers. I would like to draw their attention to the materials from which they are made - hopefully this will encourage local people to think about how they dispose of their rubbish. ”



The Heron was made from two shopping trolleys and sits in the swale by Skinners Close looking towards the fishing lakes.



## DID YOU KNOW...

THE KINGFISHER  
ORIGINATED IN THE  
INDOMALAYAN REGION  
AROUND 27 MILLION  
YEARS AGO

The Kingfisher armature is steel with colours of the bird on the outside made from cut car bumpers. It sits atop a pole to represent a tree trunk.

*Heron & Kingfisher*



# SHEREE MURRAY

Sheree Murray is a professional illustrator specialising in bespoke artistic map design. Following her graduation from University of Manchester in 2003, she travelled widely and developed a passion for illustrated maps. She opened the Cute Maps studio in Manchester's arty northern quarter in 2010.

Sheree designs for councils, parishes, domestic and international museums, charities and institutions as well as enjoying an established presence in events and wedding stationery.

Returning to her hometown Milton Keynes in 2014, Sheree was inspired to design the Milton Keynes Cute Map which was exhibited at the MK50 opening exhibition in Central Milton Keynes.

## Cute Map

The four Cute Maps are fixed into a concrete pipe of the type made by Rocla Pipes, a nod to Redhouse Park's history.



# JUSTIN TUNLEY

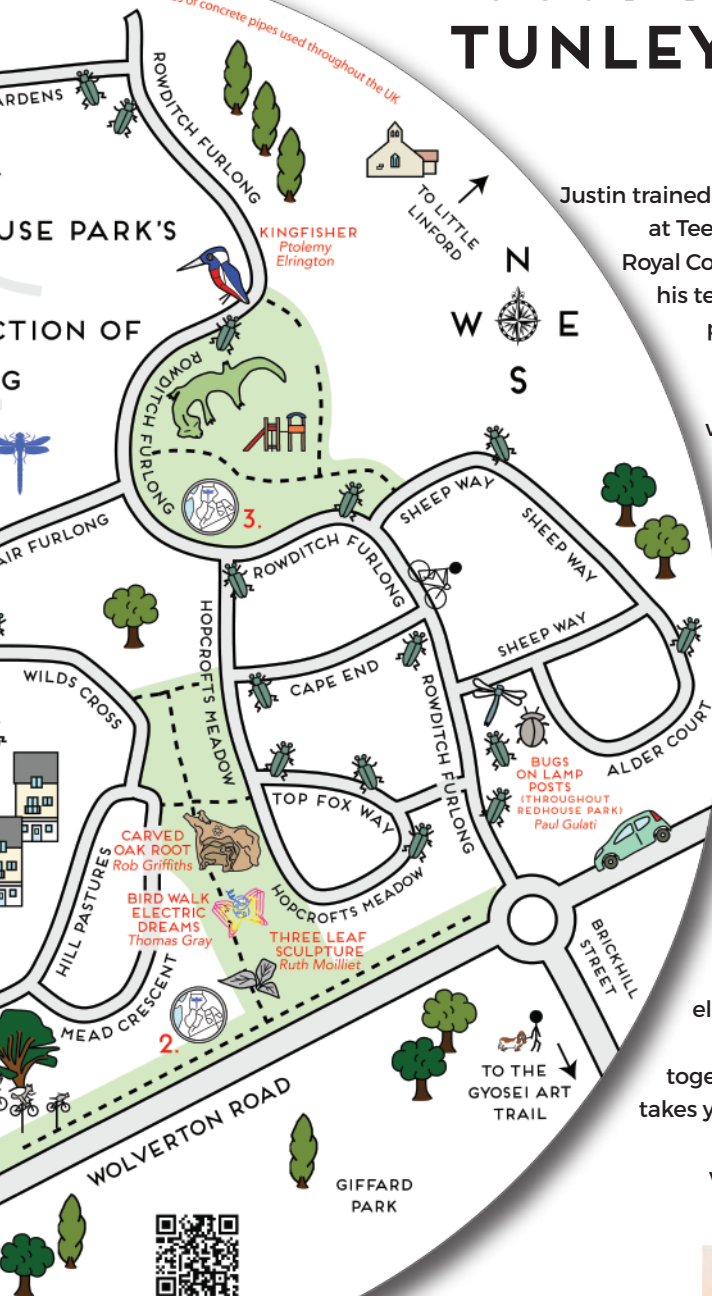


Justin trained as an Industrial Designer at Teeside Polytechnic and The Royal College of Art before cutting his teeth working with various professions and trades on external hard-works and special features, often within Public Open Space. Today his principal interest is in the intersections between manufacture, landscape, building and art – often using Computer Aided Design as a tool to this end.

## Plaques

The plaques positioned by each commission combine all these elements. On each you will find a brief description together with a QR code that takes you to the ROCLA Art Trail page on GLPC website [www.great-linford.gov.uk](http://www.great-linford.gov.uk)

Pipes who manufactured all sizes of concrete pipes used throughout the UK





# SAFFRON SUMMERFIELD

*Solar Audio Post*



Saffron Summerfield is a highly respected singer, songwriter, guitarist, sound artist, writer and poet. She has recorded nine albums, written songs for Channel 4 films, BBC R4 'Start the Week' and numerous BBC and indie radio shows. One of the few women acoustic bottle-neck blues guitarists, Saffron has toured the world, played at most major UK Folk Concerts and played support to Joan Armatrading, Fairport Convention and one memorable Radio One show with rock band Free.

Saffron's sound arts projects include digital image, music, people's stories, visuals and writing new songs.

For the commission, Saffron has created a sound story from recordings made with residents of Redhouse Park, former employees of Rocla Pipes and people who remember the site as it was before the houses were built. Birdsong from the immediate area, sounds of bats, the bells from the church of St Andrews are all woven together with poems and guitar music composed and written by Saffron. When resting on the Pipe Bench, you can select the tracks by pressing the buttons on the Oak Solar Audio Post.



## DANIEL CHEHADE

*Pipe Bench*

Studio Chehade was founded in 2012 by Daniel Chehade with works for a range of clients including Alan Kitching, Milton Keynes Arts Centre, Phaidon Press, The Hayward Gallery and the University of Arts London. Daniel previously taught at the University of Hertfordshire for over six years and runs workshops and talks throughout the year.

Daniel has designed and created a Pipe Bench in conjunction with the SolarAudio Post commission with Saffron Summerfield to provide a seat from a concrete pipe that has been installed on the north side of the pond area in Hambledines. Research into the site's history and location bedside the lake heavily informed the concept and final design. Enjoying the natural environment that is already present on location was important to Daniel.

“ I also imagined forgotten and broken concrete pipes left behind after Rocla Pipes moved out and Redhouse Park built. A concrete Pipe bench could be used for sitting, climbing and interacting with. These playful apparatus provide natural habitats for wildlife beneath. ”





# PAUL GULATI

Paul Gulati is a self-employed Sculptor/Blacksmith who has worked nationally and abroad. He offers a unique service having trained in jewellery, silversmithing as well as traditional architectural blacksmithing and sculpture.

These skills and techniques have transferred to large scale work and have provided a wide palette of skills to draw upon for design and construction of any piece of artwork. Besides steel, he regularly works with copper, aluminium, stainless steel, nickel, stone, wood and glass enamel. As well as proficiency in many manufacturing processes like forging, casting and chemical colouring.

These materials can be combined in any work to create striking, original and creative effects. The diverse range of skills allow Paul access to unusual areas of creative design. This combines well with a high practical and technical proficiency.

## *Bug on a Lamppost*

Paul Gulati has forged a variety of indigenous bugs from mild steel, some will have solid copper integrated with the steel. On ageing this will turn to a beautiful verdigris.

Feedback from residents together with Paul's research into the local nature has provided a variety of species that can be seen adorning the lampposts as you walk around Redhouse Park.



## DID YOU KNOW...

THERE ARE ROUGHLY  
ONE MILLION  
DESCRIBED SPECIES OF  
INSECTS AND  
PROBABLY UP TO SIX  
MILLION YET TO BE  
IDENTIFIED

Why not challenge yourself and see how many you can identify by downloading a Spot the Bug Sheet at

[www.great-linford.gov.uk/  
projects/bug-on-a-lamppost](http://www.great-linford.gov.uk/projects/bug-on-a-lamppost)

*Bug on a Lamppost*

# MELANIE WATTS

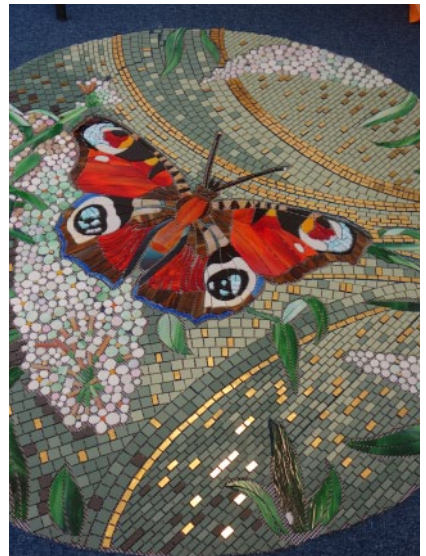


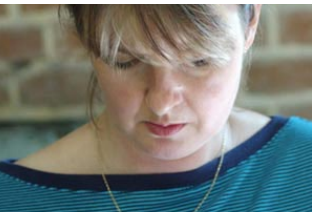
Graduating in 1993 from a BA (Hons) degree in textiles, Melanie was offered a full time studio position creating bespoke hand drawn and painted wallpaper collections and furnishing fabrics for ten years. Within this role Melanie created both contemporary and traditional wall coverings and furnishings that were international best sellers. This experience enhanced her strong drawing and design skills which help in her role as a mosaic artist.

From this, she began creating 2D and 3D ceramics and taught her broad range of skills from mosaic to textiles, painting and ceramics to young people and adults with emotional and physical difficulties. Melanie was drawn to mosaic after a trip to Morocco where the vibrant Alhambra tiles inspired her to start perusing ways to enhance walls and floors that ensured longevity, striking colour and work that could be created on a large scale – something that the public could enjoy for a long time. She then visited Barcelona and was blown away by Gaudi's mosaics and architectural masterpieces and began creating mosaic from her Milton Keynes studio. Commissions and book publications of her mosaic took off from here. She likes attention to detail and colour, inspired also by nature as well as the decorative arts, in particular art nouveau. She currently creates mosaic commissions and public art to beautifully enhance spaces.

## *Emblazoned Butterfly Mosaic*

Butterflies are an important part of our global and local ecology and their numbers are in decline. Researching on Redhouse Park and the area surrounding us, Melanie identified the Peacock Butterfly from the many different species we see in our gardens in proposing her design for a beautiful mosaic. The 1.5m mosaic is mounted in a metal frame and positioned in Hambledines where it catches the light, so observers can truly appreciate its stunning beauty and magic.





# KATE EDWARDS

Kate Edwards trained as a silversmith at St John Cass School of Art and uses traditional techniques to create unique pieces of art. With over 30 years' experience, Kate has built up a varied portfolio showing a wide range of commissions for both the private and commercial sectors. Kate works from her studio in Buckinghamshire where you are very welcome to see her work. She exhibits nationally and internationally and is a visiting lecturer at several Universities.

## *Intersection Patinated Metal Sculpture*

Inspired by research at Redhouse Park, the Linford Lakes Nature Reserve and looking at Water Lilies floating in the water that reflected the sky, Kate has produced this beautiful sculpture called Intersection made from copper with stainless steel details to give integral strength and to increase durability. Solar power provides subtle lighting. Considering the structure of the bulrush, using strong vertical detail that is softened by filigree details and engraving and textured surfaces. Watching dragonfly's wings catch the light as they zip over the water. This

local natural environment has directly influenced the design made of metal and materials that will patinate through time to form a beautiful verdigris.



### FUN FACT

NATIVE TO THE AMAZON BASIN, THE WORLD'S LARGEST WATER LILY IS VICTORIA AMAZONICA, WHOSE GIGANTIC FLOATING LEAVES MEASURE UP TO 3 M ACROSS AND ARE HELD IN PLACE UPON AN UNDERWATER STALK 7-8 M LONG.

Exposure to the environment will enable the piece to evolve and mature alongside the space in which it sits.

*Intersection Patinated Metal Sculpture*

# FESTIVE ROAD



Festive Road believe that art crosses all barriers – giving people a commonality, beyond language and cultural & physical differences. They focus on a collective output with an ethos of inclusivity, collaboration and green credentials and want to positively influence the way participatory and outdoor art is created across the UK. The approach is always innovative: using recycled materials, mixed media, music, movement and invented techniques; we create costumes, mobile structures, performance and outdoor installations; all as vehicles for collaborative expression.

Festive Road work brings people of all cultures, abilities and ages together, with an emphasis on community cohesion, confidence building, creative skills and cultural celebration. They provide creative activities for community groups, family learning and in educational settings; training, skills development and employment opportunities for artists, volunteers and trainees.

## *Returning from a Bike Ride*

Festive Road were asked to design an arrival installation for Redhouse Park, in the form of three bicycles mounted on lampposts each increasing in size each with a seated character giving chase to the one in front. Clive Doherty, Creative & Technical Director has captured the comedy in this trio which is sited in a row in front of the Big Tree on Lime Kiln Way adjacent to the redway.



Great Locality  
Proud Community

[www.great-linford.gov.uk](http://www.great-linford.gov.uk)

Parish Council Office:

Great Linford House  
1 Leger Court  
Great Linford  
MK14 5HA

Tel: 01908 606613

**DID  
YOUKNOW...**

THE REDWAY WAS  
ORIGINALLY TO BE  
CALLED THE PEDWAY,  
BEING A CROSS  
BETWEEN PEDESTRIAN  
AND PEDAL.

*Returning from a Bike Ride*